

Galena Trilobites

Item #: 001

Here is a very attractive *Ceraurus cf. pleurexanthemus*. This is a very inflated specimen showing great detail, the hypostome is even visible on the underside. The matrix has been reinforced under the trilobite because it was found upside-down and prepped by Gerry Kloc.

Ceraurus cf. pleurexanthemus (31.85mm long)

Prosser member, Galena Formation

Upper Ordovician- Shermanian

Fillmore County, Minnesota

Price: \$1100



Item #: 002

Here is a very nice and uncommon specimen of *Anataphrus borraeus*. This trilobite is extremely inflated and displays well on the top of a free standing sliver of limestone matrix. This is a very hard trilobite to find in such nice condition.

Anataphrus borraeus (15.22mm wide)

Prosser member, Galena Formation

Upper Ordovician- Shermanian

Fillmore County, Minnesota

Price: \$225



Maquoketa Trilobites

Item #: 003

Here is a unique double example of *Anataphrus vigilans*. Both of the eyes are present on each specimen and they are nicely articulated with tight free-cheeks. Though the trilobites are incomplete, they display very well perched atop a natural piece of shale.

Anataphrus vigilans (larger specimen is 24.71mm wide)

Clermont member, Maquoketa Formation

Upper Ordovician- Richmondian

Fayette County, Iowa

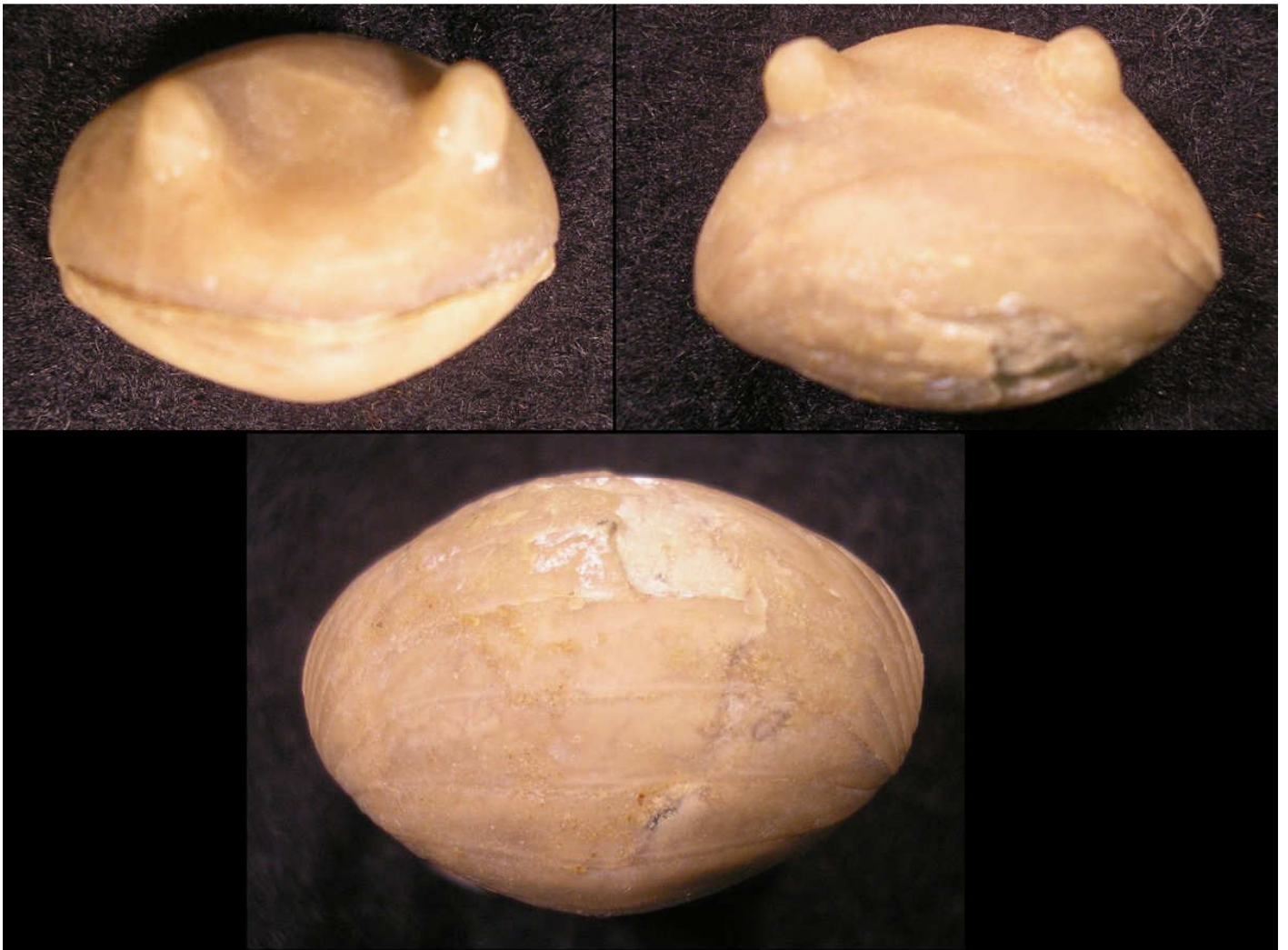
Price: \$65



Item #: 004

Free of all matrix, this rolled *Anataphrus vigilans* is a fantastic bug. On the larger end of the spectrum, this trilobite is very inflated and shows the eyes spectacularly.

Anataphrus vigilans (23.5mm wide)
Clermont member, Maquoketa Formation
Upper Ordovician- Richmondian
Fayette County, Iowa
Price: \$110



Item #: 005

This is a nice unique example of *Anataphrus vigilans*. This specimen is mostly prone, which is very unusual for this genus. This is a very inflated trilobite sitting nicely on a small block of matrix.

Anataphrus vigilans (22.07mm long)
Elgin member, Maquoketa Formation
Upper Ordovician- Richmondian
Fillmore County, Minnesota
Price: \$115



Item #: 006

Growth series not only make great displays but take a long time to assemble. This is a series of 6 very nice *Anataphrus vigilans*. All trilobites are exceptionally inflated and show their features well. This is a very uncommon opportunity to get a pre-assembled quality growth series.

Anataphrus vigilans

Clermont member, Maquoketa Formation

Upper Ordovician- Richmondian

Fayette County, Iowa

Price: \$650



Item #: 007

Not to be confused with its brethren, *Flexicalymene fayettensis* is a unique and very uncommon trilobite. This is a very nicely inflated specimen free of all matrix. It exhibits great detail and would be an excellent addition to any collection.

Flexicalymene fayettensis (18.8mm wide)

Clermont member, Maquoketa Formation

Upper Ordovician- Richmondian

Fayette County, Iowa

Price: \$125



Platteville Trilobites

Item #: 009

This is a small, slightly compressed but complete specimen of *Dolichoharpes reticulata* offered at a reasonable price. The piece also contains the partial cephalon of a *Ceraurinella scofieldi*.

Dolichoharpes reticulata (19.74mm long)

Mifflin member, Platteville Formation

Middle Ordovician- Blackriverian

Grant County, Wisconsin

Price: \$1000



Item #: 010

This is a very rare cheirurid *Ceraurinella scofieldi* in great condition. This hard to find trilobite is very inflated with great detail on the cephalon and shows the short genal spines quite nicely. It is an enrolled specimen, and the presence of the small pygidium is unknown, it may be there further under the glabella.

Ceraurinella scofieldi (18.2mm wide)
Mifflin member, Platteville Formation
Middle Ordovician- Blackriverian
Grant County, Wisconsin
Price: \$300



Item #: 011

This is a very nice *Gabriceraurus mifflinensis* from Wisconsin. It is extremely inflated and has superb detail. This specimen was meticulously prepared by Gerry Kloc.

Gabriceraurus mifflinensis (40.09mm long if prone)

Mifflin member, Platteville Formation

Middle Ordovician- Blackriverian

Grant County, Wisconsin

Price: \$1300



Item #: 012

Here is a nice *Thaleops ovata* in the prone position which is quite uncommon. The large eyes and long genal spines make this a very attractive and recognizable trilobite. Part of the right genal spine is missing but the matrix has been sculpted to mimic the spine. The specimen is wonderfully articulated with tight free-cheeks and has a wonderful caramel color that contrasts well with the matrix.

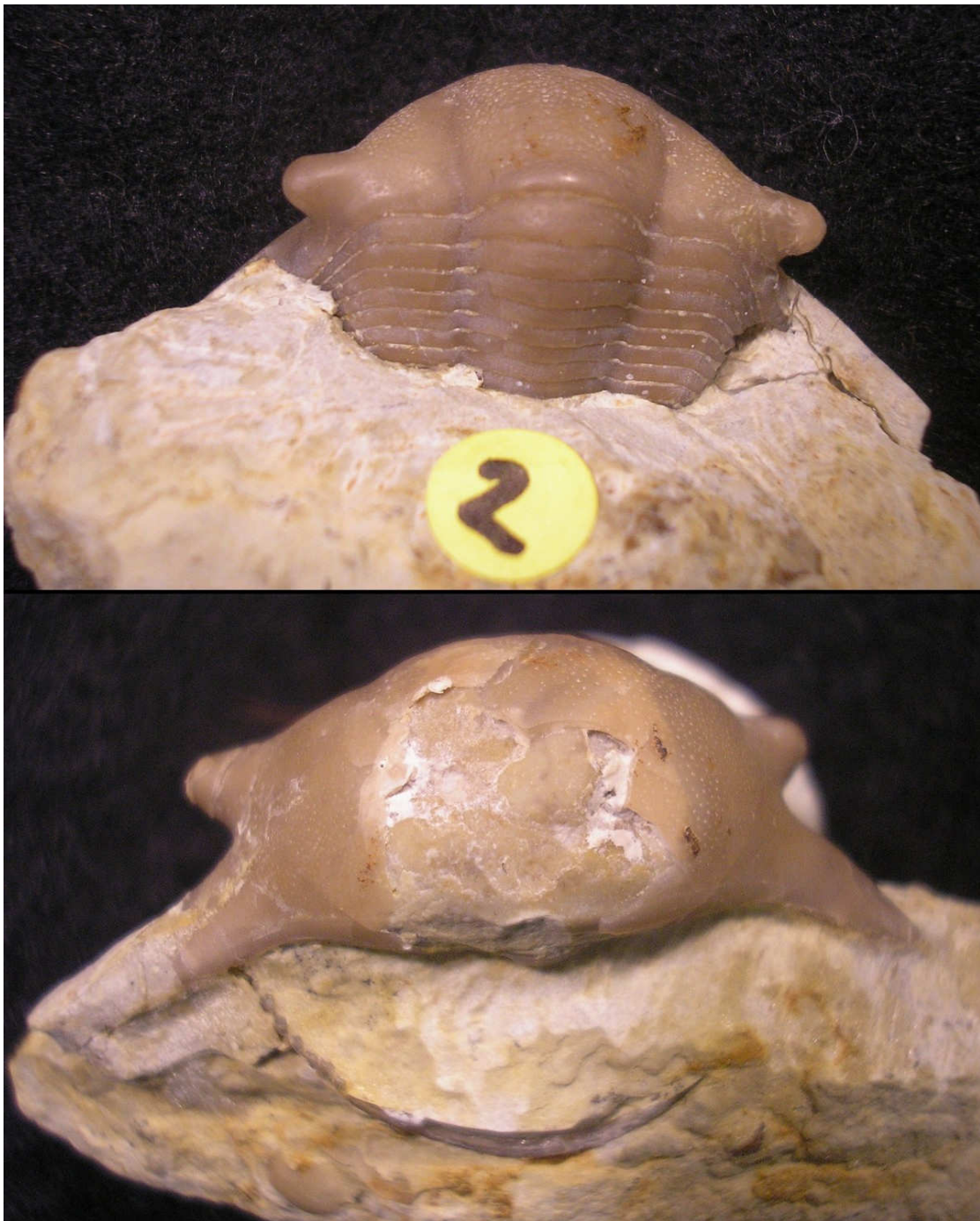
Thaleops ovata (18.35mm long, 32.05mm wide)

Mifflin member, Platteville Formation

Middle Ordovician- Blackriverian

Grant County, Wisconsin

Price: \$800



Item #: 013

This is an enrolled *Thaleops ovata* with free spines. Both spines are natural to this trilobite and have not been composited from other specimens.

Thaleops ovata (26.41mm wide)

Mifflin member, Platteville Formation

Middle Ordovician- Blackriverian

Grant County, Wisconsin

Price: \$600



Item #: 014

Sceptaspis lincolnensis is a very seldom seen trilobite, and extremely rare outside of Canada. This unique Pterygometopid is so rarely found complete and inflated that even a proper description went uncompleted for almost 75 years. This is a prone example that shows off its elongated genal spines, pinched tail and schizochroal eyes.

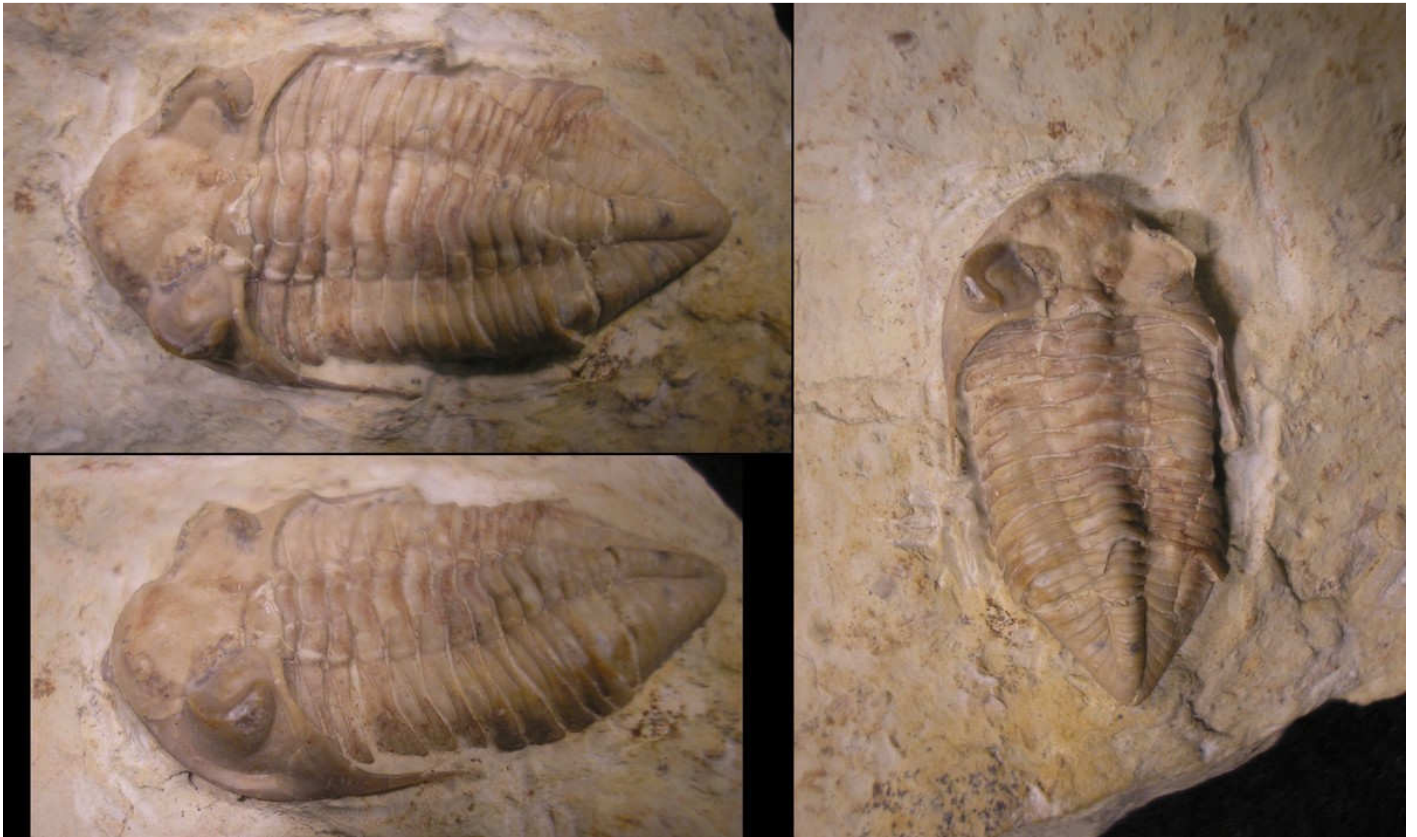
Sceptaspis lincolnensis (27.72mm long)

Mifflin member, Platteville Formation

Middle Ordovician- Blackriverian

Grant County, Wisconsin

Price: \$500



Item #: 017

Thaleops ovata (19.5mm long, 33.32mm wide)

Mifflin member, Platteville Formation

Middle Ordovician- Blackriverian

Grant County, Wisconsin

Price: \$300



Item #: 018

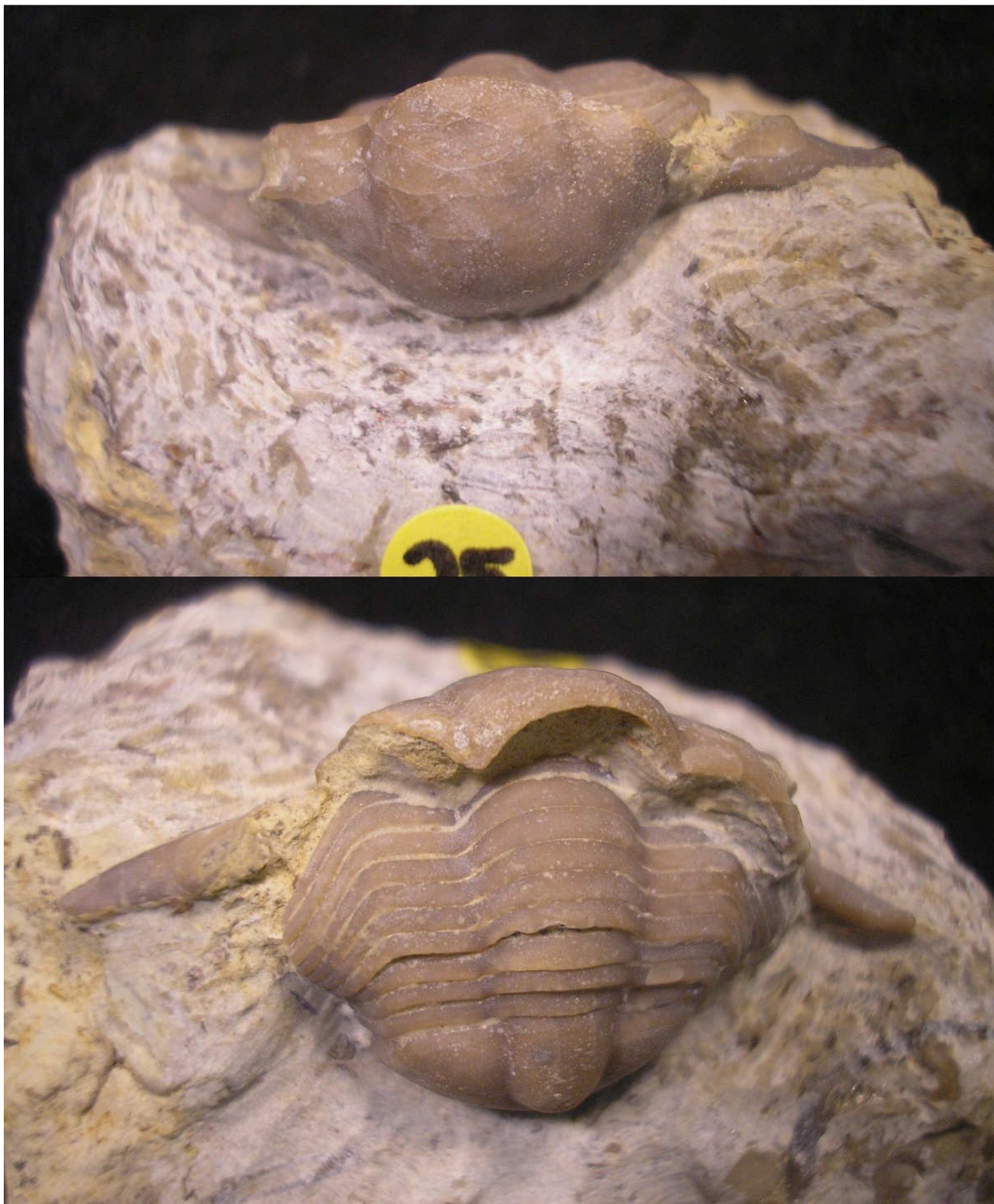
Thaleops ovata (16.31mm long)

Mifflin member, Platteville Formation

Middle Ordovician- Blackriverian

Grant County, Wisconsin

Price: \$300



Item #: 019

Bumastoides milleri (17.4mm wide)

Mifflin member, Platteville Formation

Middle Ordovician- Blackriverian

Grant County, Wisconsin

Price: \$250



Item #: 020

Isotelus simplex (48.3mm long)

Mifflin member, Platteville Formation

Middle Ordovician- Blackriverian

Grant County, Wisconsin

Price: \$60.00



Decorah Trilobites

Item #: 021

Here is a great prone example of the elusive trilobite *Eomonorachus intermedius*. This specimen features very long genal spines and shows great detail. It is among one of the rarer Decorah Formation trilobites and would make a great addition to any collection.

Eomonorachus intermedius

Decorah Formation

Middle Ordovician- Chatfieldian

Grant County, Wisconsin

Price: \$400



Item #: 022

This is a large slab with over 5 *Eomonorachus intermedius* preserved. Death assemblages of this type of trilobite are extremely rare.

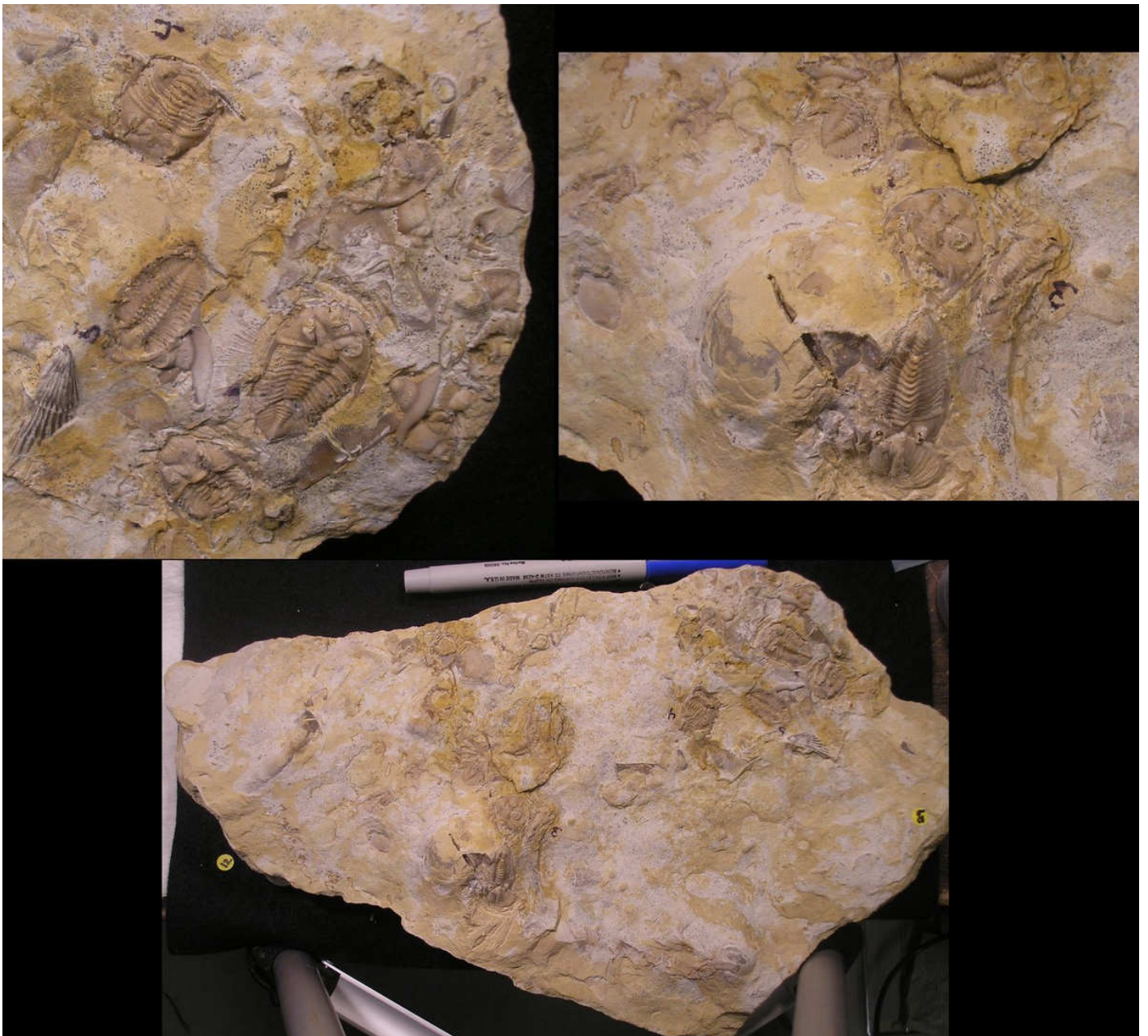
Eomonorachus intermedius

Decorah Formation

Middle Ordovician- Chatfieldian

Grant County, Wisconsin

Price: \$750 (firm)



Order Form

Trilobite name: _____

Item Number: _____

Size: _____

Price: _____

For any questions about any of these specimens, feel free to contact us at:

Phone: 608-498-2302

Email: midwestfossils@gmail.com

Website: midwestpaleo.com

We accept most forms of payment:

PayPal, Money Order, Cash, and Personal Check (allow time to clear)

Items will be shipped as soon as possible after payment is received.